

X-Loupe[®] ForteLite

World's 1st Portable anti-stokes imaging system

Rapid background removal and high contrast fingerprints in seconds

Compatible with Nikon and Canon DSLR cameras



► New Revolution of Forensic Lighting ◀

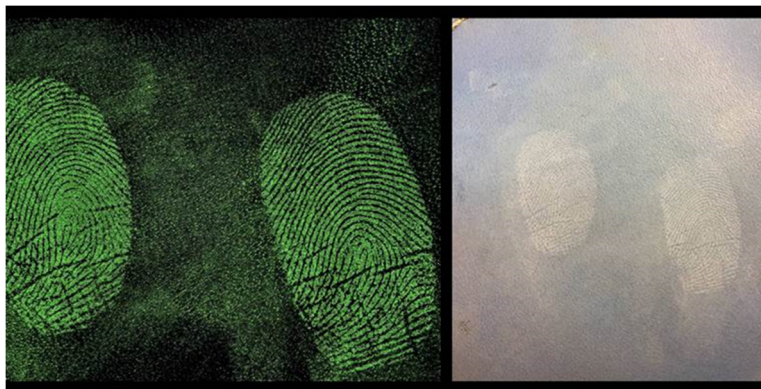


The ForteLite is a powerful 980nm infra-red LED illumination source that works in combination with anti-stokes powders. Anti-stokes powders are applied to the evidence with a magnetic applicator brush. When illuminated with the Fortelite the powder produces an anti-stokes wavelength shift which is a fluorescence in a lower wavelength - in this case a visible Green wavelength. Since the 980 nm is infra-red and invisible to the camera and human eye, this reveals a high contrast fingerprint in seconds removing the background colour/pattern saving significant time and money compared to traditional techniques such as superglue, dye and stain. It provides a quick and efficient method of enhancing fingerprints on traditionally difficult substrates such as painted surfaces like drink cans, glossy surfaces like magazine covers and any surfaces with high background colour or a patterned surface.

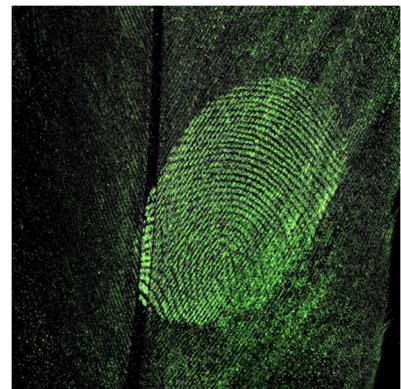
Key features:-

- ✓ 2 illumination settings (switchable between White and 980nm IR)
- ✓ Fits to your existing DSLR camera (Nikon or Canon)
- ✓ Produces 1:1 scaled images in seconds
- ✓ Portable and lightweight (ideal for Lab use or crime scene)
- ✓ Powered via Lithium Ion re-chargeable battery.

Fingerprints on Leather



Fingerprints on bird feathers



X-Loupe® ForteLite System Specification

Control Unit	
Power Output	110W / Channel (MAX)
Function	Power On / off; Dimming Control; Light Source (Channel) Switch
Power Input	Recommended 1.External Battery: SONY V-mount BP series rechargeable battery (The battery is not included in the package) or 2.Adapter*: DC IN: DC 19V / 6A (*The adapter does not support V-battery charging; only use the dedicated charger for V-battery charging)
Material	Steel, Aluminum, PC-ABS, carbon fiber. RoHS compliant
Declaration of Conformity	FCC, CE
Operation Environment	0~40°C
Weight	1105g (Max)
Dimension(mm)	195(L) x 105.7(W) x 77.4(H)
Light Pack 1: Latent Fingerprint Light Source (for Regular / Anti-Stokes powders)	
Light source / Channel	IR and White light sources
Power Consumption	42W (Max)
Dimming Control	Stepless illumination Intensity is dimmable from 1~100%, default setting 50%
Material	Steel, Aluminum, PC-ABS. RoHS compliant
Operation Environment	0~40°C
Weight	620g (Max)
Dimension (mm)	145(L) x 115(W) x 128(H)

Precautions for use

⚠ Warning ⚠

Read all instructions and understand the warnings prior to using this product.

Failure to read and follow these safety instructions could result in fire, explosion, electrical shock or other hazard causing serious and/or fatal injury and/or property damage. Please obey the following instructions.

- 1.This product is not a toy. Keep out of reach of children.
- 2.This device equipped high-brightness excitation LEDs; it is intense enough to injure eyes. While operating, for eyes safety, DO NOT look directly excitation light source, or stare the leak of light at close range.
- 3.DO NOT leave this device near the heat source or use in a hot environment; The device has ventilation holes to prevent the internal temperature from becoming too high. Pay attention to the running of cooling fan. DO NOT block the ventilation hole/vent hole of cooling fan.
- 4.Keep the device away from water or other liquids. A humid device could result in fire or electric shock. If it's wet, immediately turn off the device power, then wipe out the liquid the device surface.
- 5.Turn off the LED lights when you aren't using them.
- 6.Refer all servicing to your distributor. Servicing is required when the device has been damaged in any way, such as power-supply cord is damaged, liquid has been spilled, the apparatus has been exposed to rain or moisture, does not operate normally, or has been dropped. Do NOT disassemble, alter or modify to this device.